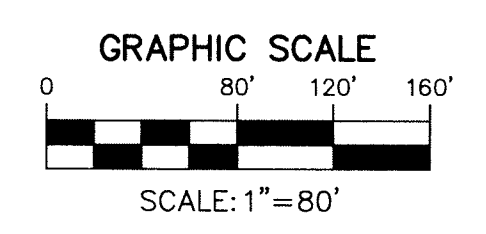
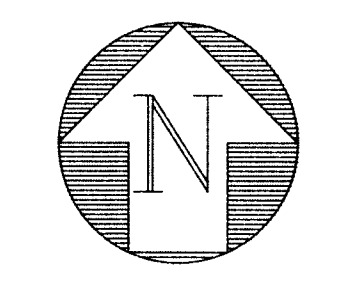
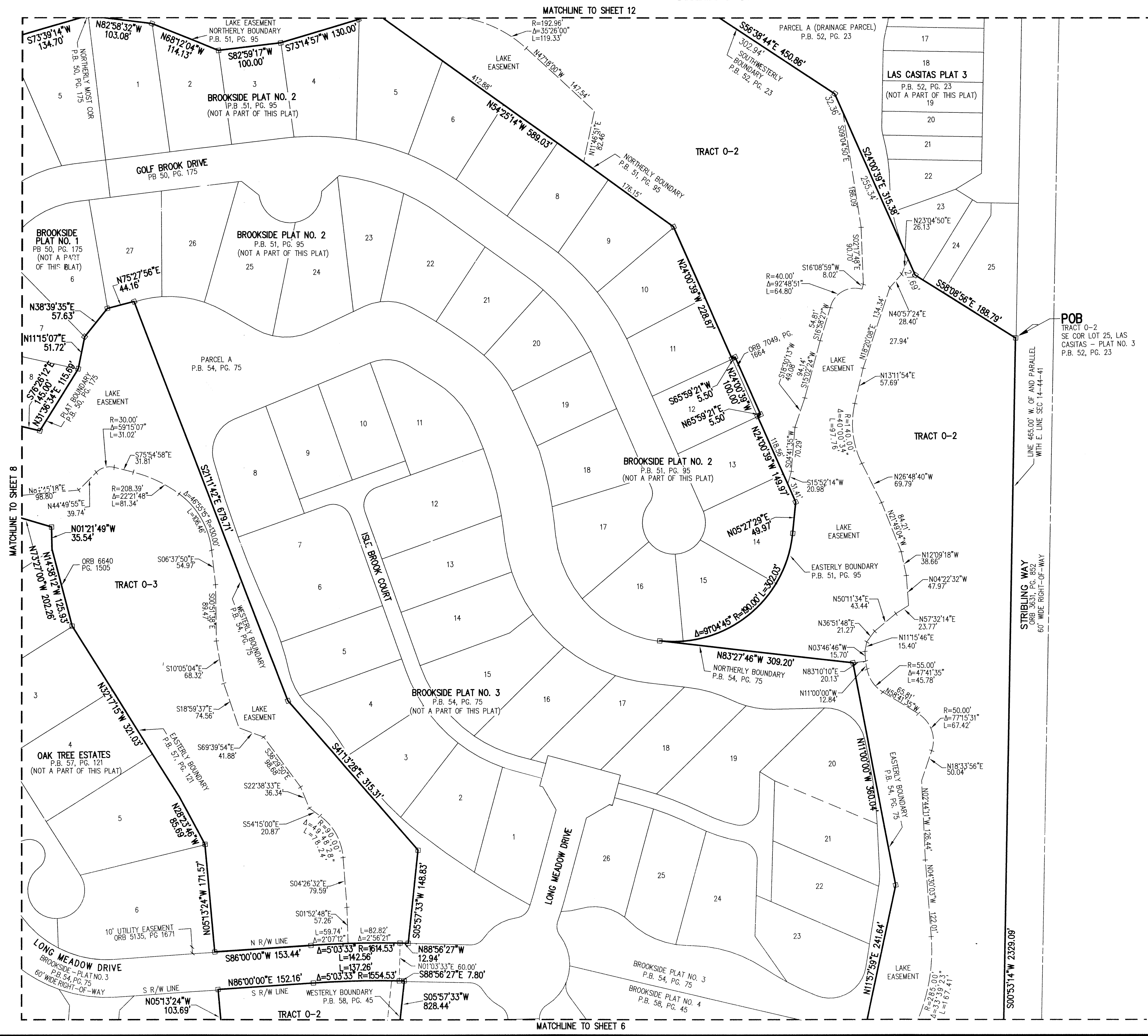


DUNES PRESERVE AT PALM BEACH POLO & COUNTRY CLUB P.O.A. INC.

BEING IN PART A REPLAT OF DUNES PLAT NO. 1 HOLES 14 AND 18, PLAT BOOK 68, PAGES 158 THROUGH 161, PUBLIC RECORDS OF PALM BEACH COUNTY, FLORIDA, LYING IN SECTION 14, TOWNSHIP 44 SOUTH, RANGE 41 EAST, VILLAGE OF WELLINGTON, PALM BEACH COUNTY, FLORIDA

SEPTEMBER 2020
SHEET 7 OF 12

70



POB
TRACT 0-2
SE COR LOT 25, LAS
CASITAS - PLAT NO. 3
P.B. 52, PG. 23

STRIBLING WAY
ORB 3631, PG. 852
60' WIDE RIGHT-OF-WAY

THIS INSTRUMENT PREPARED BY C. ANDRE RAYMAN, P.S.M. LS#4938 STATE OF FLORIDA.
ENGENUITY GROUP, INC. ENGINEERS SURVEYORS AND GIS MAPPERS
1280 N. CONGRESS AVE., SUITE 101, WEST PALM BEACH, FLORIDA 33409.
CERTIFICATE OF AUTHORIZATION NO. LB0006603

A Higher Standard of Excellence
engenuity group inc.
ENGINEERS • SURVEYORS • GIS MAPPERS

1280 N. CONGRESS AVENUE, SUITE 101,
WEST PALM BEACH, FLORIDA 33409
PH (561) 655-1151 • FAX (561) 832-9390
WWW.ENGENUITYGROUP.COM

DATE	03/05/2020
SCALE	1"=80'
CAD FILE	18078.01.04 PLAT
SOX PROJECT	18078.01 PB POLO CLUB
DRAWN	STAFF
CHECKED	STAFF

SHEET NO.	7/12
	JOB NO.
18078.01.04	